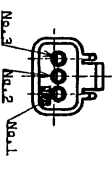
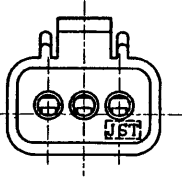
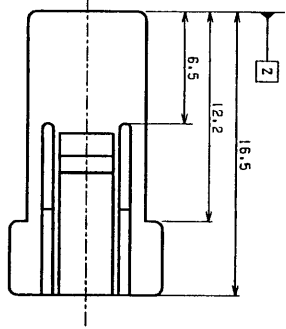
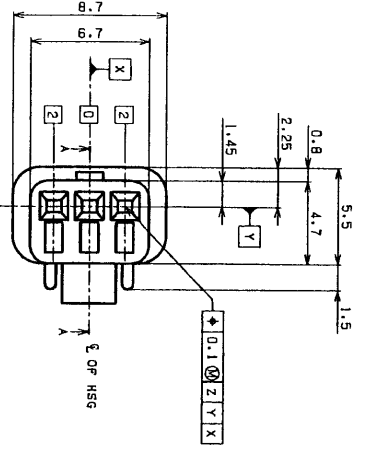
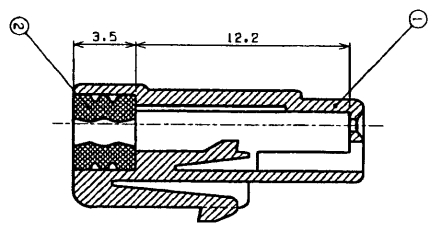
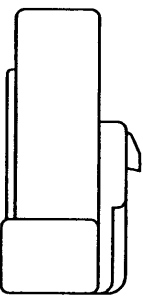


3849818

REV	DESCRIPTION	DATE	DESIGNED
-2	Drawing Renewal	Dec-26, 2000	K. Yusa



NOTE  
 1. UNLESS OTHERWISE SPECIFIED TOLERANCES ARE  
 2. LOCATION OF CIRCUIT NUMBER



SECTION A-A

UNCONTROLLED ISSUE

J.S.T. (U.K.) LTD.  
 08 AUG 2001  
 TECH.SALES  
 SUPPORT

2	Seal Rubber Pliers	SI (Light Blue)									
1	Stainless Steel Housing	PBT (Natural)									
MATERIAL											
SURFACE FINISH											
REMARKS											
A2	METRIC	0:1									
PROJECTION DATE											
DEC-26, 2000											
DESIGNED											
K. Yusa											
DRAWN											
DAR-JMPC-VCL-E-5											
DRAWING NO.											
KRO-25216-2											
RD											

JST J.S.T. MFG. CO., LTD

THIS DRAWING CONTAINS INFORMATION THAT IS PROPRIETARY TO J.S.T. AND SHOULD NOT BE USED WITHOUT WRITTEN PERMISSION.

24113-2

Cover sheet for  
JWPF range.

# New Product

# JST



Compact water-proof wire-to-wire connector, with the use of the 025 terminals and the solid wire-sealing rubber.

### Double-leaf construction

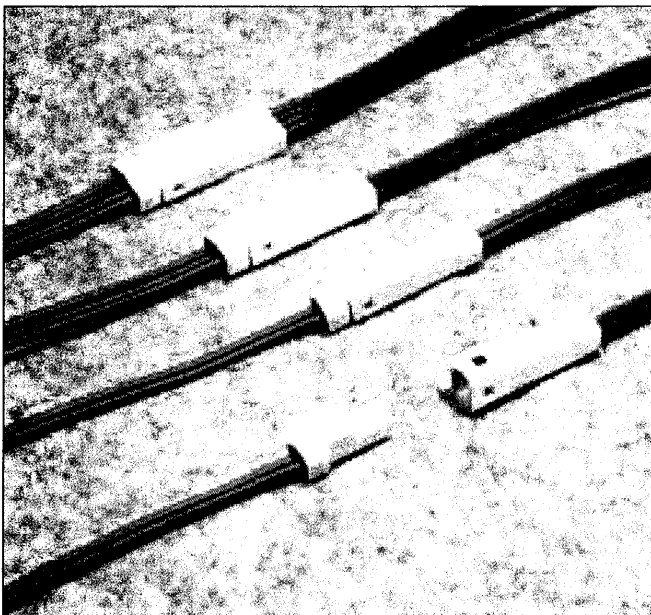
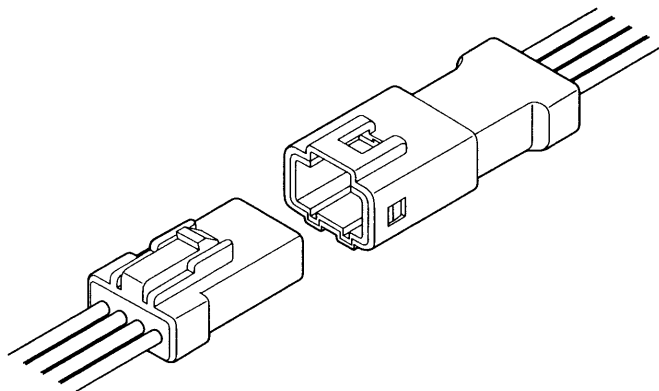
Superior contact performance is provided by the double-leaf construction, consisting of the main leaf and the assist leaf.

### Housing lances

The contact retention lances on the resilient housing allow the confirmation of contact lock-in for easy and secure insertion.

### Inter-housing lock

This inter-housing lock secures the plug to the receptacle and prevents accidental disconnection. The lock protected and is not affected by external forces that might result from the routing of wires.



### ■ Specifications

- Current rating : 3.0A AC, DC
- Voltage rating : 100 V AC, DC
- Temperature : - 25 °C ~ + 85 °C (including temperature range rise in applying electrical current)
- Wires applicable : AWG #26 ~ #22  
Insulation O.D. : 1.4 ~ 1.74 mm dia
- No. of circuits : 2 ~ 4 circuits

**J.S.T. MFG. CO., LTD.**  
<URL> <http://www.jst-mfg.com>

**Sales offices**  
Utsunomiya, Yokohama, Hachioji, Nagano, Aichi, Osaka, Kurayoshi, Hiroshima, Fukuoka in Japan and Belgium, Spain, U.K., Germany, France, Italy, U.S.A., Singapore, Thailand, Malaysia, China (Hong Kong, Shanghai), Taiwan, Korea, Australia

**Engineering Centers**  
Osaka, Yokohama, Nagoya, Tsuyama, Kurayoshi in Japan and U.S.A., U.K., Singapore

**Plants**  
Nishi - Kurayoshi, Kurayoshi, Misasa, In-no-sho, Tsuyama, Utsunomiya, Ooda, Oohara, Urayasu in Japan and Belgium, France, U.S.A., Indonesia

00.10-3