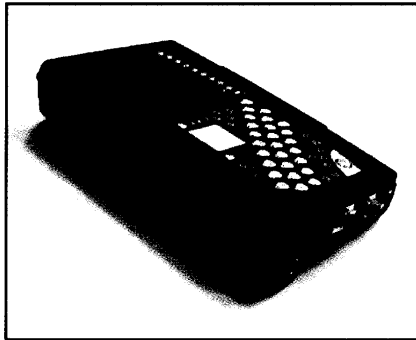
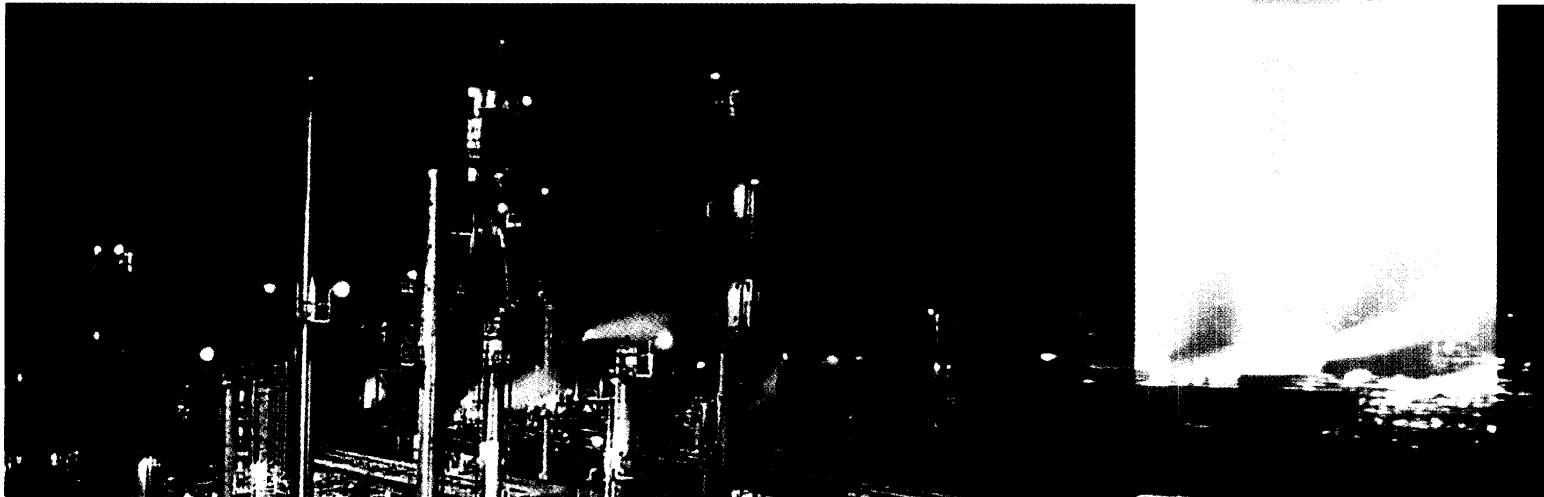


348 - 3241



The **CTEC Hand Held Computer**, is a fully functional computer which incorporates all the power of a standard PC. Sealed to IP67 it has been designed to be completely submersible, can withstand shock to 750G and is resistant to a wide range of chemicals. Combine this with the Lithium Ion battery pack, and the CTEC Computer will outperform any PC currently available, in terms of endurance and durability.

The CTEC Computer is not merely functional, the stylish ergonomic design means that it rests comfortably in the hand enabling the user to operate it for longer periods and is also stable on the desk top.

Standard Features of the CTEC Hand Held Computer include-

- ⊗ **AMD SC410 66MHz Processor (also available as 100 MHz)**
- ⊗ **32/64 Mbyte RAM**
- ⊗ **6.4 Gbyte HDD - (up to 18Gb) - optional Solid State**
- ⊗ **2 x RS232 Serial ports + Infra-Red IRDA**
- ⊗ **Ethernet - 10 base-t**
- ⊗ **High Capacity Lithium Ion Battery**
- ⊗ **2 x Internal PCMCIA ports**
- ⊗ **On-board PS2 Mouse pad**
- ⊗ **Connections for external VGA monitor and standard keyboard**
- ⊗ **Display - 24bit, true full colour, dual scan STN, 640x480, 4.7 inch screen**

The CTEC Hand Held PC can do practically anything an office PC can do. Windows 3.1, 95, 98, DOS, NT, QNX, LINUX etc.. can all be run. For the first time ever the user can utilise low cost commercial packages available everywhere. Eliminating the need to use limited Windows CE applications or having to write bespoke software.

With the internal PCMCIA ports our hand held PC offers the versatility of optional features like modems with GSM compatibility, radio-modems, data acquisition, test and measurement functions and Global Satellite Positioning.

From the onset we have designed our computer with the corporate customer in mind. Our standard keyboard layout can be offered in customised colours and/or badged. Alternatively a customer specific keypad can be produced for a minimal initial outlay.



CLEVELAND TEST EQUIPMENT COMPANY

Hand Held Computer

CTEC HAND HELD COMPUTER

PROCESSOR

AMD Elan SC410 66MHz with advanced power management features (100MHz option)

OPERATING SYSTEM

Standard: MS Windows 98,
Options include: Win 3.1, Win 95, Win NT, GNX, others available on request

MEMORY

32/64Mbytes of DRAM as standard
2Mbytes of video memory
2Mbytes of Flash memory for BIOS and Solid State Disk

DISK STORAGE

6.4Gbytes HDD as standard (up to 18 Gbytes)
Optional Solid State Disk

DISPLAY

4.7 inch, 640 x 480 resolution, 24 bit true colour, dual scan STN with integral back light. Automatic adjustment of contrast to suit ambient conditions

Screen data can be rotated through 360° giving choice of either 'portrait' or 'landscape' view

KEYBOARD / FACIA

Full 'QWERTY' Windows style keyboard with tactile feedback and 'sticky' key functionality
Integral resistive mouse pad
Battery / power status LED indicators
Dedicated manual contrast adjustment keys

BATTERY

Lithium Ion rechargeable - typical operation 8 hours per charge
Fast charge - 75% capacity in 1.5 hours
Full charge - approx. 2.5 hours

PCMCIA

Two internal Type I/II slots (or one Type III)

COMMUNICATIONS *See note 1

Two RS232 Serial ports (one configurable as (RS485)

Infra-Red IRDA port

Ethernet 10 base-T

Bi-directional Centronics parallel port with EPP and ECP support

Keyboard interface

VGA output

I/O *See note 1

Three channel 12 bit A/D

ENVIRONMENTAL

Sealing: Waterproof to IP67

ESD: CE compliant

Shock: 250G operational with Hard Disk spinning (750G max)

Temperature:

Operating range -10 to +50°C

Storage range -20 to +60°C

PHYSICAL

Construction: Case material PC-ABS
Neoprene over moulding

Screen protection - Scratch and impact resistive glass coated Polycarbonate

Weight: approx 1.8Kg

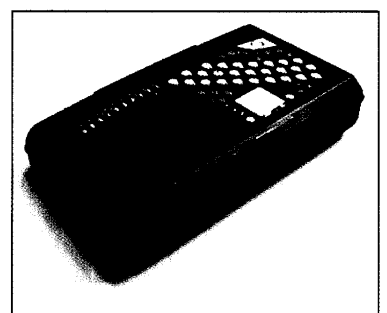
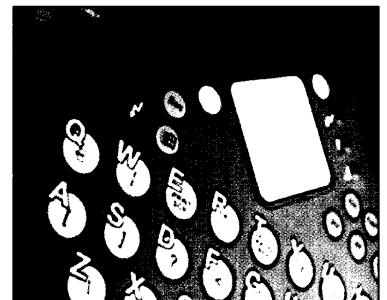
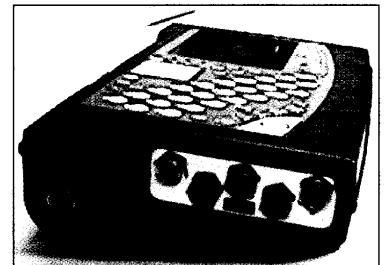
CONNECTORS / CABLE ACCESSORIES

Military spec. locking connectors used for interfacing communications and I/O functions.

Please contact CTEC for options

*note 1

Various connector configurations and leads are available, for the latest options please contact CTEC Sales



DIMENSIONS

Please note all measurements are approximate.

Length: 280mm

Width: 155mm

Depth: 50mm

CLEVELAND TEST EQUIPMENT COMPANY

Hand Held Computer